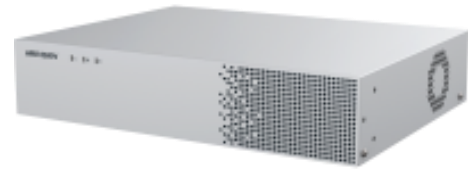


**iDS-6708NXI-M1/X**

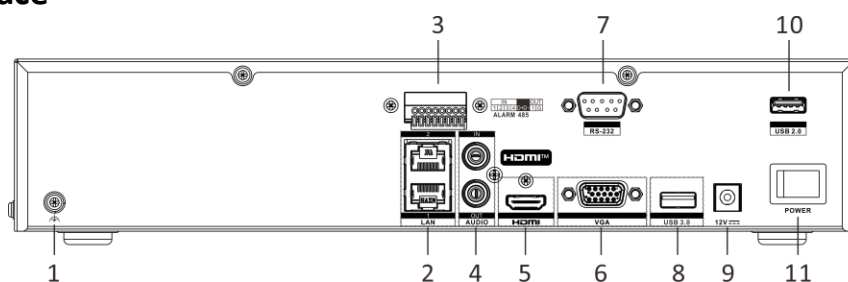
- Up to 2-ch@32 MP/2-ch@24 MP/4-ch@12 MP/8-ch@8 MP decoding capacity
- H.265+/H.265/H.264+/H.264 video formats
- Up to 8-ch IP cameras can be connected
- Intelligent analytics based on deep learning algorithm
- Up to 8-ch perimeter protection
- Up to 8-ch facial recognition for video stream, and up to 8-ch facial recognition for face picture
- Up to 8-ch video structuralization

## ▪ Specification

<b>AcuSearch</b>	
By NVR	All channels ,up to 345,600 targets/day The camera should enable AcuSearch function
By Camera	up to 4-ch,up to 345,600 targets/day
<b>Intelligent Analytics</b>	
AI by NVR	Facial recognition, perimeter protection, and video structuralization
AI by Camera	Facial recognition, perimeter protection, motion detection 2.0, video structuralization, ANPR, people counting, and VCA
Engine	1 engine can run an intelligent algorithm, engine mode is adjustable
<b>Facial Recognition</b>	
Facial Detection and Analytics	Face picture comparison, human face capture, face picture search
Facial Detection and Analytics Performance	Face pictures captured by NVR: 8-ch, up to 8 MP
Face Picture Comparison	8-ch; Comparison speed: 24 pictures per second; Face pictures are captured by NVR or camera
Face Picture Library	Up to 32 face picture libraries, up to 100,000 face pictures in list library, up to 10,000 face pictures in stranger library, up to 5,000,000 face pictures in face capture (each picture ≤ 4 MB, total capacity ≤ 20 GB)
<b>Perimeter Protection</b>	
By NVR	8-ch 2 MP
By Camera	All channels
<b>Video Structuralization</b>	
Structured Analysis	6-ch 2 MP
Face Picture Comparison	8-ch; Comparison speed: 24 pictures per second; Face pictures are captured by NVR or camera
Face Picture Library	Up to 32 face picture libraries, up to 100,000 face pictures in list library, up to 10,000 face pictures in stranger library, up to 500,000 face pictures in face capture (each picture ≤ 4 MB, total capacity ≤ 20 GB)
<b>ANPR</b>	
By Camera	All channels
Plate Attributes	Vehicle brand, vehicle color, vehicle type
Vehicle Attributes	Plate number, license plate color, license plate type
<b>Video and Audio</b>	
IP Video Input	8-ch Up to 32 MP resolution *: NVR supports up to 8-ch 32 MP/24 MP IP video inputs.
Incoming Bandwidth	128 Mbps
Outgoing Bandwidth	256 Mbps
Video Output Mode	HDMI/VGA independent output
CVBS Output	1-ch, BNC (1.0 Vp-p, 75 Ω), resolution: PAL: 704 × 576, NTSC: 704 × 480
Audio Output	1-ch, RCA (Linear, 1 kΩ)
Two-Way Audio	1-ch, RCA (2.0 Vp-p, 1 k Ω)
HDMI Output	8K (7680 × 4320)/30 Hz, 4K (3840 × 2160)/60 Hz, 4K (3840 × 2160)/30 Hz, 2K (2560 × 1440)/60 Hz, 1080P (1920 × 1080)/60 Hz

VGA Output	1080P (1920 × 1080)/60 Hz
<b>Decoding</b>	
Decoding Format	H.265/H.265+/H.264/H.264+
Decoding Capability	2-ch@32 MP (30 fps)/2-ch@24 MP (30 fps)/4-ch@16 MP (30 fps)/8-ch@8 MP (30 fps)
Synchronous Playback	8-ch
Recording Resolution	32 MP/24 MP/12 MP/8 MP/6 MP/5 MP/4 MP/3 MP/1080p/UXGA/720p/VGA /4CIF/DCIF/ 2CIF/CIF/QCIF *: NVR supports up to 8-ch 32 MP/24 MP IP video inputs.
<b>Network</b>	
Remote Connection	128
Network Protocol	TCP/IP, DHCP, IPv4, IPv6, DNS, DDNS, NTP, RTSP, SADP, SMTP, SNMP, NFS, iSCSI, ISUP, UPnP™, HTTP, HTTPS
API	ONVIF (profileS/G); SDK; ISAPI
Compatible Browser	IE11, Chrome V57, Firefox V52, Safari V12, Edge V89, or above version
Network Interface	2, RJ-45 10/100/1000 Mbps self-adaptive Ethernet interface
<b>Auxiliary Interface</b>	
SATA	1 SATA interface
Capacity	Up to 20 TB capacity for each HDD
Serial Interface	1 RS-232 interface , 1 RS-485 interface
USB Interface	Rear panel: 1 × USB 2.0; Rear panel: 1 × USB 3.0
Alarm In/Out	4/1
<b>General</b>	
GUI Language	English, Russian, Bulgarian, Hungarian, Greek, German, Italian, Czech, Slovak, French, Polish, Dutch, Portuguese, Spanish, Romanian, Turkish, Japanese, Danish, Swedish Language, Norwegian, Finnish, Korean, Traditional Chinese, Thai, Estonian, Vietnamese, Croatian, Slovenian, Serbian, Latvian, Lithuanian, Uzbek, Kazakh, Arabic, Ukrainian, Kyrgyz , Brazilian Portuguese, Indonesian, Hebrew
Power Supply	12 VDC, 3.33A
Consumption	≤ 50 W
Working Temperature	-10 to 55° C (14 to 131° F)
Working Humidity	10 to 90%
Dimension (W × D × H)	320 × 243 × 65 mm ( 12.6"× 9.6" × 2.6")
Weight	≤ 4 kg
<b>Certification</b>	
Obtained Certification	CE, CB, REACH, WEEE, UKCA
CE	EN 62368-1:2014,EN 62368-1:2014+A11:2017

## ▪ Physical Interface

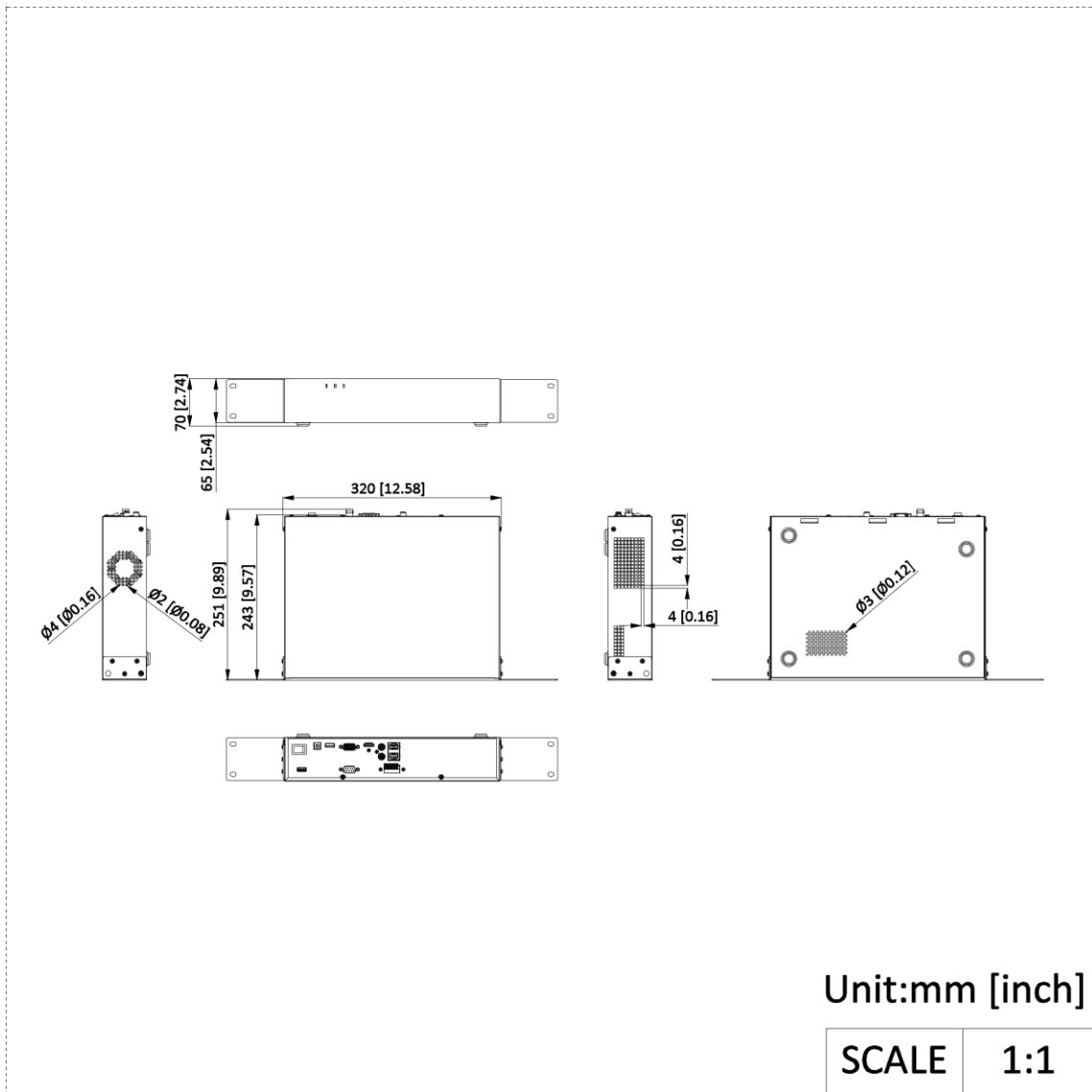


No.	Description	No.	Description
1	GND	7	RS-232 serial interface
2	LAN interfaces	8	USB 3.0 interface
3	RS-485 serial interface, alarm in, and alarm out	9	Power supply
4	Audio in and audio out, RCA connector	10	USB 2.0 interface
5	HDMI interface	11	Power switch
6	VGA interface		

## ▪ Available Model

iDS-6708NXI-M1/X(1×4T)

▪ Dimension



# See Far, Go Further



[www.hikvision.com](http://www.hikvision.com)  
[support@hikvision.com](mailto:support@hikvision.com)

